

*Northampton Town
East Stand Development*



ENTRANCE

EAST STAND

Highlights

- Club's first ever pitch facing hospitality
 - Completion first quarter 2025
 - Capacity increase
- Over 100 new parking spaces with new EV charging spaces
 - Accessible viewing platform returns
- Accessible parking relocated to safer, more convenient location
 - Cycle storage units
- Concourse area with kiosks and screens
 - New Executive Box level
- 2 new large dining areas, Executive Lounge and Boardroom
 - Full-service commercial kitchen
 - New link road around Stadium

CGI's



ENTRANCE

EAST STAND





PARKER'S DECORATING LTD
Info@parkerdecorating.co.uk 01604 630224



ENTRANCE

EAST STAND





COFFEE MENU

- ESPRESSO 1.50
- MACCHIATO 1.80
- CAPPUCCINO 2.00
- AMERICANO 1.80
- FRAPPE 2.50
- FRAPPE MANDARINA 2.50
- FRAPPE MANGIAFRUTTI 2.50
- FRAPPE MANGIAFRUTTI MANDARINA 2.50
- FRAPPE MANGIAFRUTTI MANGIAFRUTTI 2.50
- FRAPPE MANGIAFRUTTI MANGIAFRUTTI MANDARINA 2.50
- FRAPPE MANGIAFRUTTI MANGIAFRUTTI MANGIAFRUTTI MANDARINA 2.50

PIZZA

- PIZZA CLASSICA 4.50
- PIZZA MARGHERITA 4.50
- PIZZA QUATTRO FORMAGGI 4.50
- PIZZA SALIZADA 4.50
- PIZZA SALIZADA MANDARINA 4.50
- PIZZA SALIZADA MANGIAFRUTTI 4.50
- PIZZA SALIZADA MANGIAFRUTTI MANDARINA 4.50
- PIZZA SALIZADA MANGIAFRUTTI MANGIAFRUTTI 4.50
- PIZZA SALIZADA MANGIAFRUTTI MANGIAFRUTTI MANDARINA 4.50

SALADS

- SALADA CLASSICA 4.50
- SALADA MARGHERITA 4.50
- SALADA QUATTRO FORMAGGI 4.50
- SALADA SALIZADA 4.50
- SALADA SALIZADA MANDARINA 4.50
- SALADA SALIZADA MANGIAFRUTTI 4.50
- SALADA SALIZADA MANGIAFRUTTI MANDARINA 4.50
- SALADA SALIZADA MANGIAFRUTTI MANGIAFRUTTI 4.50
- SALADA SALIZADA MANGIAFRUTTI MANGIAFRUTTI MANDARINA 4.50

PIZZA 5.50

Antipasto

- Antipasto Classico 4.50
- Antipasto Margherita 4.50
- Antipasto Quattro Formaggi 4.50
- Antipasto Salizada 4.50
- Antipasto Salizada Mandarina 4.50
- Antipasto Salizada Mangiafrutti 4.50
- Antipasto Salizada Mangiafrutti Mandarina 4.50
- Antipasto Salizada Mangiafrutti Mangiafrutti 4.50
- Antipasto Salizada Mangiafrutti Mangiafrutti Mandarina 4.50



Block B





Cobblers
lounge

22



2024/25 SEASON TICKETS ARE NOW ON SALE!
2024/25
SEASON TICKETS



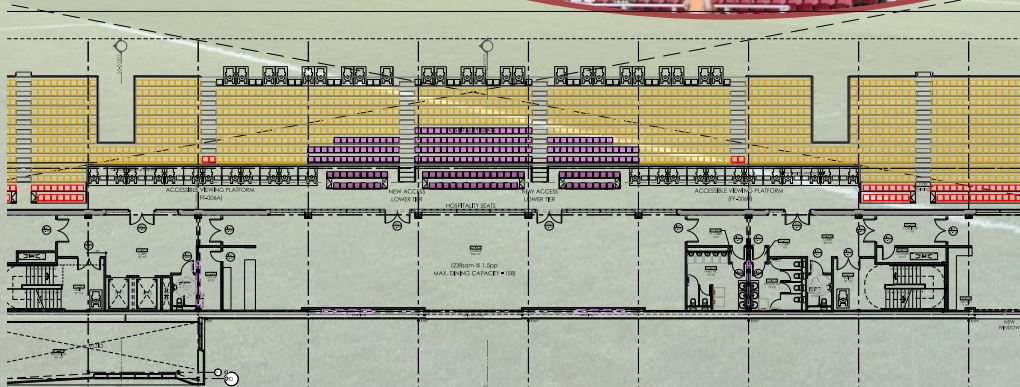
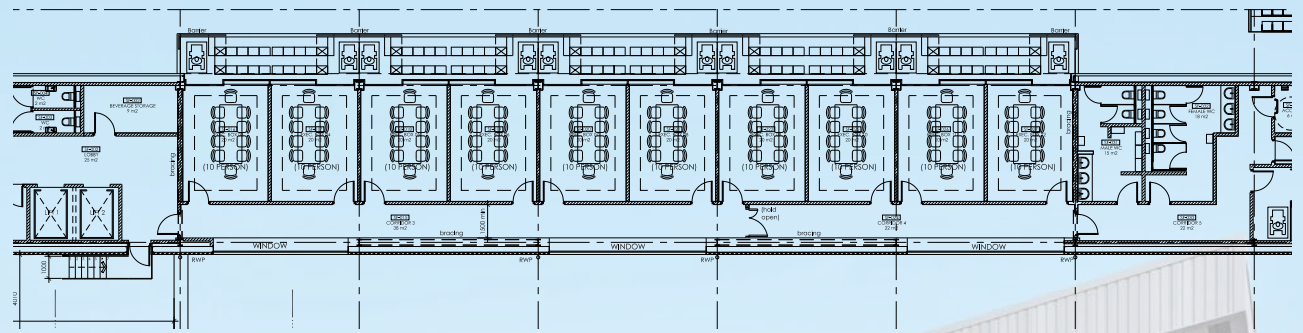
Taking a closer look...



ENTRANCE

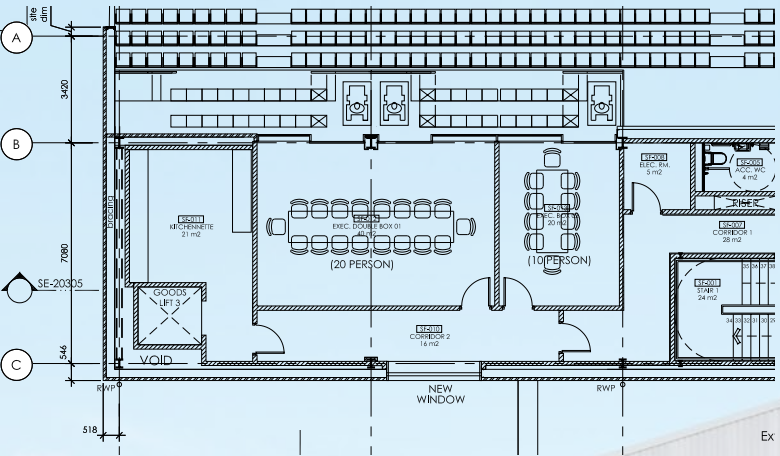
EAST STAND

Executive Box Corridor

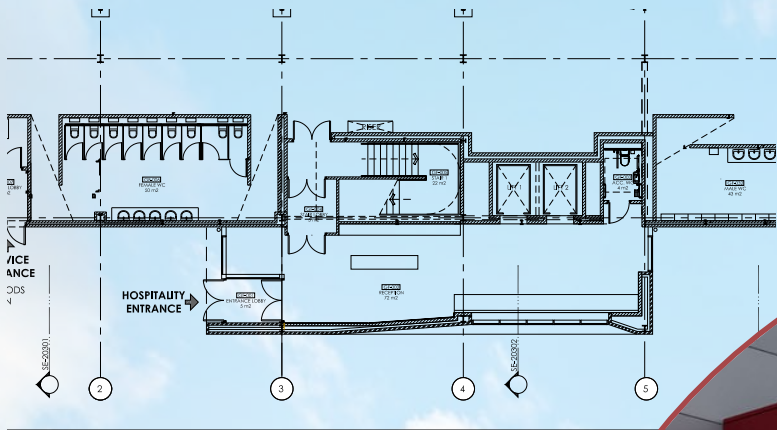


Accessible Platform Returns





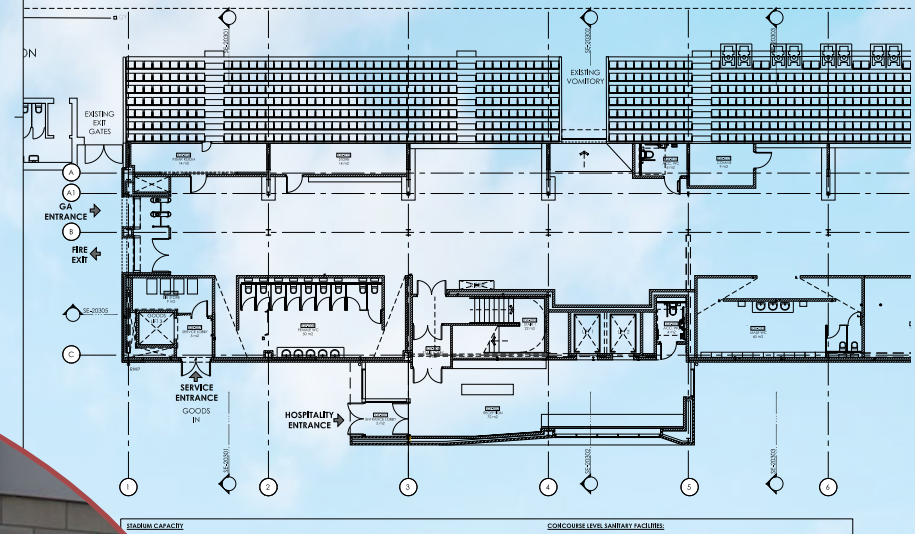
Executive Box Balconies



CONCOURSE LEVEL SANITARY FACILITIES



*New
Entrance*

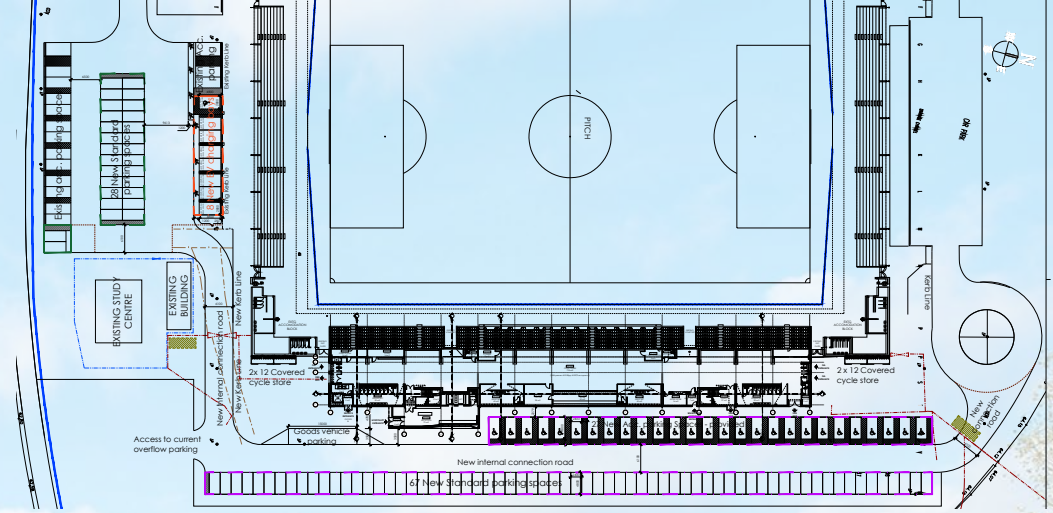


*New Access
Gates*



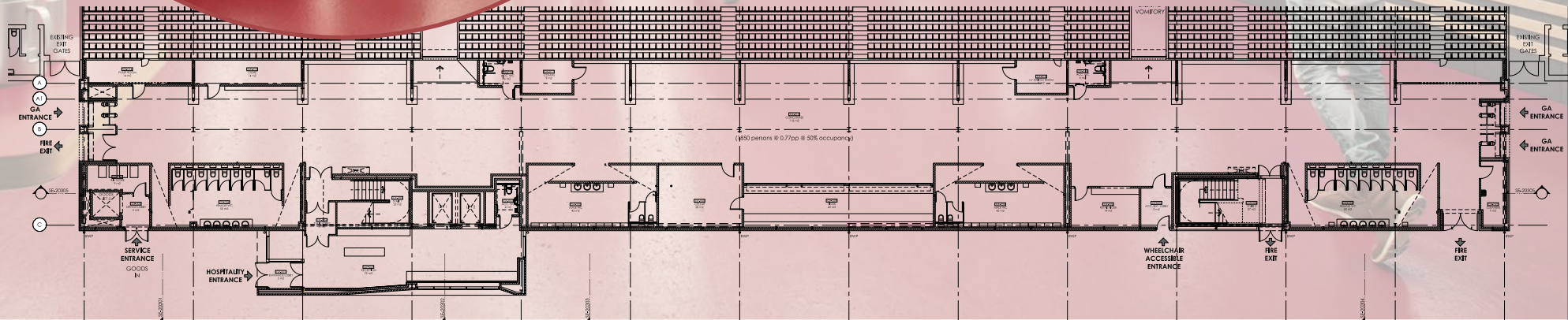
East Stand Parking

- Over 100 new parking spaces
- Relocated accessible spaces
- New EV charging spaces
- New link road for stadium
- Cycle storage spaces

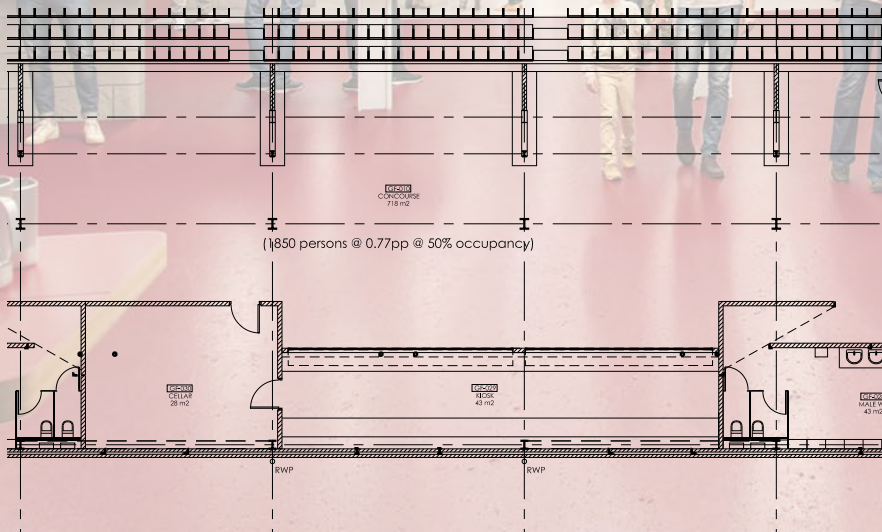


Main Concourse

New bar & food offerings, family area, retail kiosk, toilets (including accessible), and TV's.

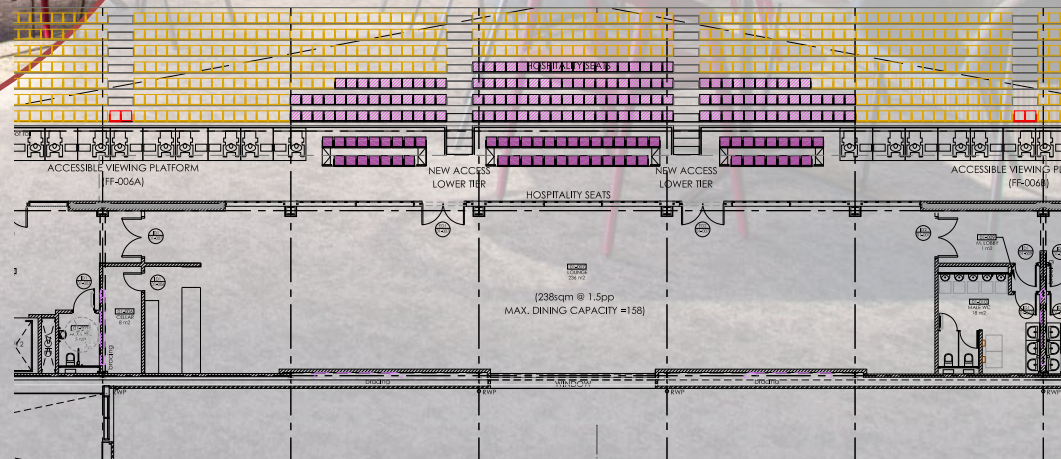


New Food & Beverage Kiosks

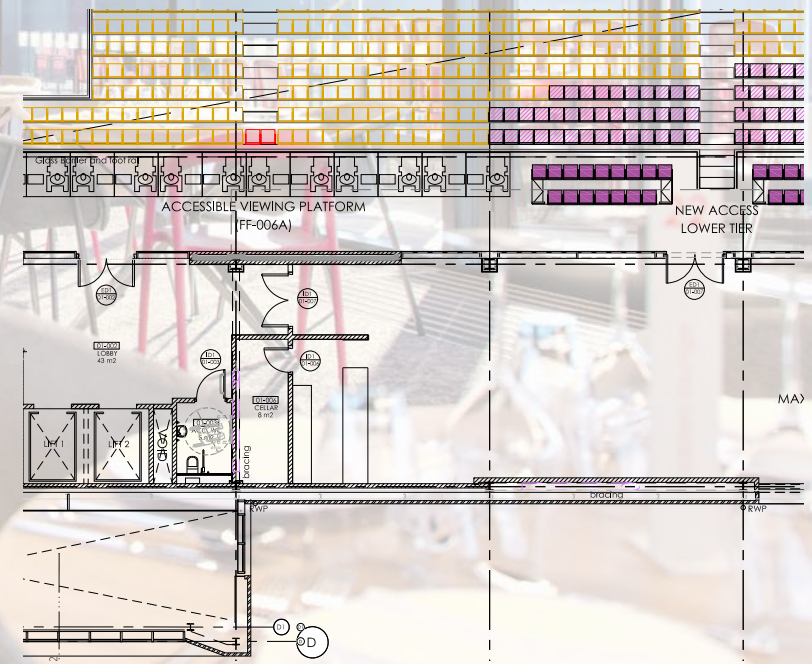


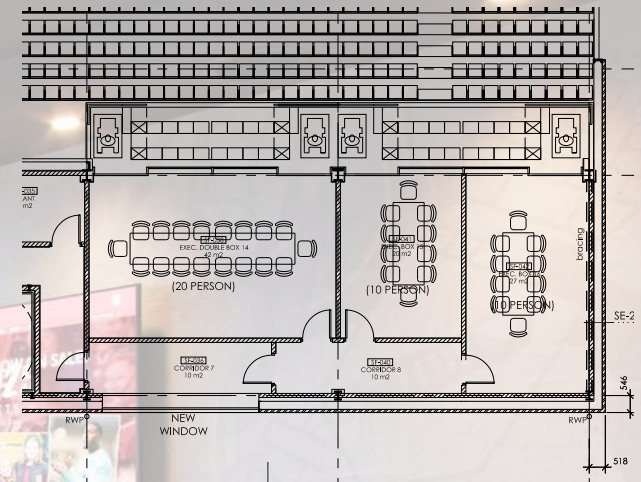
New Executive Lounge

Pitch facing hospitality
Hospitality seating in stand



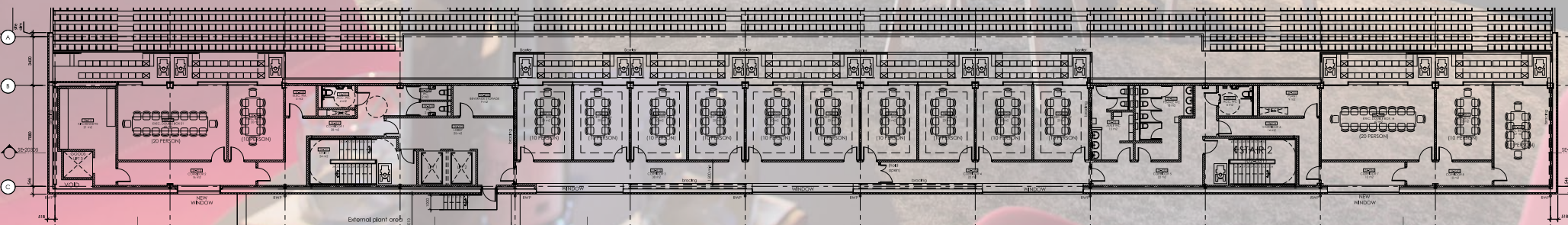
Executive Lounge Bar





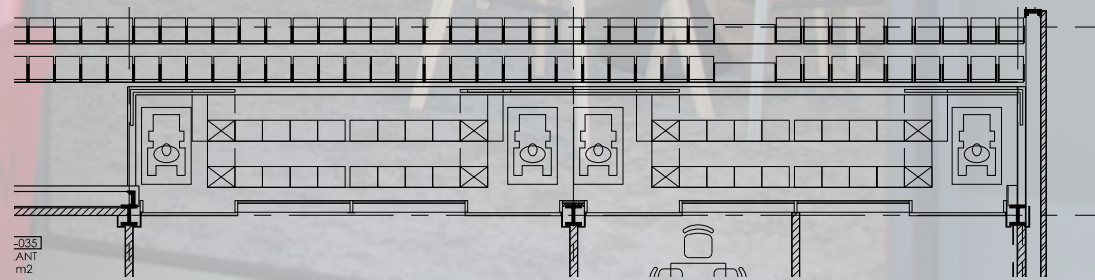
Executive Boxes

Flexible seating configuration
Meeting space available



Executive Boxes

Executive balcony outdoor seating



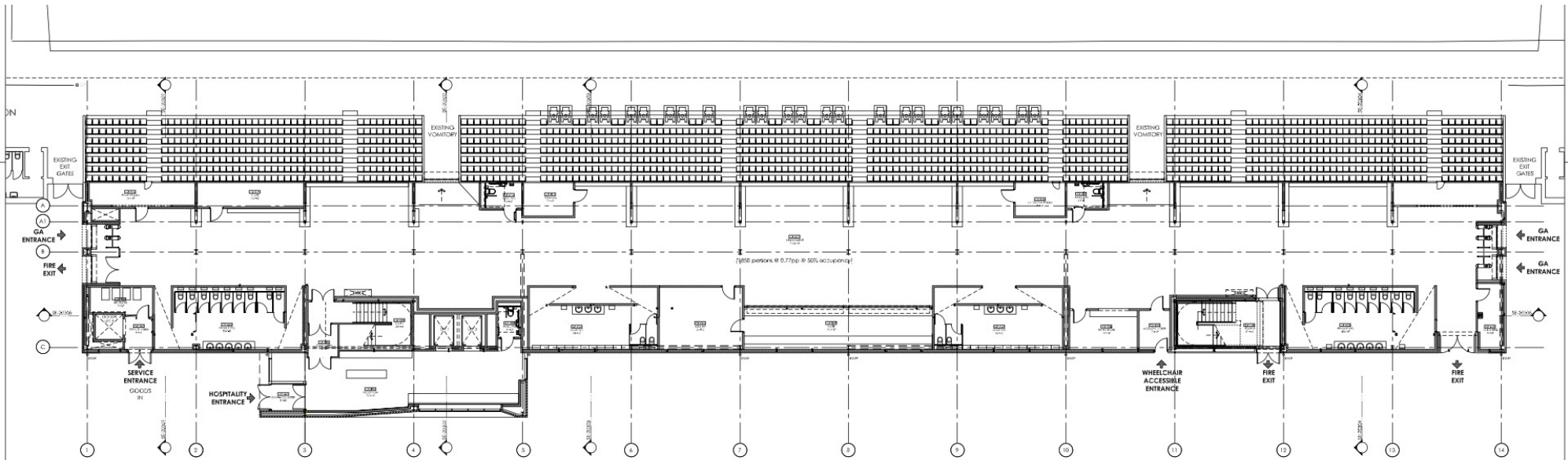
Plans



ENTRANCE

EAST STAND

Ground Floor



ALL DIMENSIONS AND LEVELS ARE TO BE CHECKED ON SITE. ANY DISCREPANCIES ARE TO BE REPORTED TO THE ARCHITECT IMMEDIATELY. THIS DRAWING SHALL NOT BE REPRODUCED OR COPIED FOR ANY PURPOSES WITHOUT THE WRITTEN PERMISSION OF AFL LTD.

PROJECT: BISHOPSCOTE PLAZA
 DATE: 12/11/2024
 DRAWN BY: J. SMITH
 CHECKED BY: M. JONES
 APPROVED BY: A. BROWN



DATE: 12/11/2024
 BY: J. SMITH
 FOR: Bishopscote Town Centre Bond
 SITE: Bishopscote, Northampton

PROJECT: BISHOPSCOTE PLAZA
 DATE: 12/11/2024
 DRAWN BY: J. SMITH
 CHECKED BY: M. JONES
 APPROVED BY: A. BROWN

PROJECT: BISHOPSCOTE PLAZA
 DATE: 12/11/2024
 DRAWN BY: J. SMITH
 CHECKED BY: M. JONES
 APPROVED BY: A. BROWN

PROJECT: BISHOPSCOTE PLAZA
 DATE: 12/11/2024
 DRAWN BY: J. SMITH
 CHECKED BY: M. JONES
 APPROVED BY: A. BROWN

PROJECT: BISHOPSCOTE PLAZA
 DATE: 12/11/2024
 DRAWN BY: J. SMITH
 CHECKED BY: M. JONES
 APPROVED BY: A. BROWN

First Floor



ALL DIMENSIONS AND LEVELS ARE TO BE CHECKED ON SITE. ANY DISCREPANCIES ARE TO BE REPORTED TO THE ARCHITECT IMMEDIATELY. THIS DRAWING SHALL NOT BE USED TO ACCELERATE ANY DIMENSIONS FROM AS BUILT.

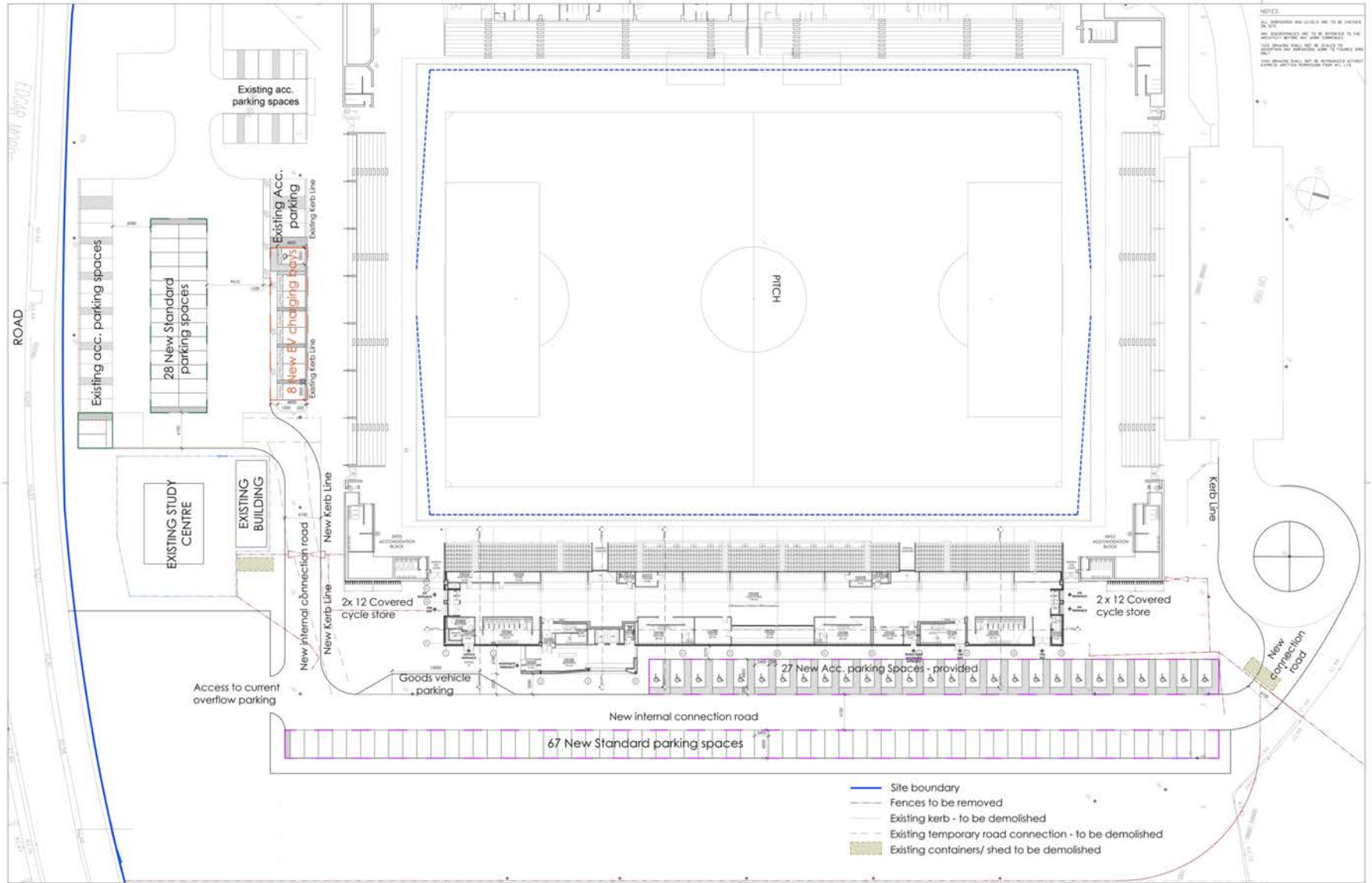
PROJ: 2018-0101 - GROUNDWORK
 PRO: 2018-0101 - GROUNDWORK
 DES: 2018-0101 - GROUNDWORK
 DES: 2018-0101 - GROUNDWORK
 DES: 2018-0101 - GROUNDWORK
 DES: 2018-0101 - GROUNDWORK
 DES: 2018-0101 - GROUNDWORK



PROJ: 2018-0101 - GROUNDWORK
 PRO: 2018-0101 - GROUNDWORK
 DES: 2018-0101 - GROUNDWORK
 DES: 2018-0101 - GROUNDWORK
 DES: 2018-0101 - GROUNDWORK
 DES: 2018-0101 - GROUNDWORK

PROJ: 2018-0101 - GROUNDWORK
 PRO: 2018-0101 - GROUNDWORK
 DES: 2018-0101 - GROUNDWORK
 DES: 2018-0101 - GROUNDWORK
 DES: 2018-0101 - GROUNDWORK
 DES: 2018-0101 - GROUNDWORK

Site Map



NOTES:
 ALL DIMENSIONS AND LEVELS ARE TO BE CHECKED
 ON SITE. DIMENSIONS ARE TO BE CHECKED TO THE
 SURFACE OF THE ROAD AND TO THE SURFACE OF THE
 ROAD. DIMENSIONS SHALL NOT BE INTERPRETED AS
 DIMENSIONS TO THE SURFACE OF THE ROAD.

Question & Answers



ENTRANCE

EAST STAND

What is the time frame for completion of the East Stand?

GRS are on site having completed a lot of the preliminary paperwork and clearing of the site. The construction of their site compound has begun, and they will be fully on site in the close season. There will be a construction phase, a testing phase and an operational ramp up phase with a target opening in the first quarter of 2025. The club will of course be updating supporters as progress is made.

Will this affect access to the East Stand during construction?

Working alongside GRS, the club will be looking to keep any disruption to an absolute minimum, and GRS will do as much work as they can during the close season and on days/weeks when there are no matches at Sixfields. Of course, this is a major construction project so there may be some disruption, but all parties will work together to ensure this is kept to an absolute minimum.

As an East Stand ticket holder will I need to move during building work?

We hope not, and as above, all parties will work together to ensure any disruption is kept to an absolute minimum. However, if any season ticket holder does need to move for a short period, they will be accommodated elsewhere in the stadium.

Will the old Accessible Viewing platform from the old stand be replaced?

Yes, this is a commitment the club have always made so there will be 24 accessible spaces, including PA accommodation available on the elevated viewing platform plus each of the boxes will also have an accessible space (17). The Stand has been designed in accordance with current accessibility standards and the club has liaised with Level Playing Field during the process.

How will supporters who use a wheelchair access this platform?

Supporters who use a wheelchair and have a space on the platform will enter through reception where there will be access to the lifts and the platform.

How will supporters who use a wheelchair using the raised platform have access to refreshments?

Supporters who use wheelchairs will also be able to purchase access to the new Executive Lounge in the same way as other fans, but the club also plans to offer a direct “delivery to seat service” for supporters on the accessible platform.

How do I buy a box or hospitality tickets in the new stand?

All options will be released in good time so please keep an eye on the club's website. There is already an interest list for executive boxes and hospitality offerings so if you are interested in putting you or your company's name on this list please email commercial@ntfc.co.uk

Does the Football Club lose any parking?

No, in fact the club has gained over 100 new spaces. These mainly service the East Stand while the club has been able to relocate the majority of accessible parking spaces to a safer and more convenient location behind the East Stand. All existing parking remains at this point. Included in the new spaces there will also be EV charging spaces in keeping with our sustainability policy to minimise the club's impact on the environment wherever possible, and one of these EV charging spaces will also be accessible.

How will fans access the East Stand parking?

Part of the development will enable the completion of a link road around the outside of the whole stadium. Access to the East Stand will typically be through the main access by the club shop and then along the link road through the South Stand car park.

Is there a provision for bike storage in the new stand?

Yes, there will be two cycle storage units for each end as part of the club's commitment to sustainability.

Fans Village

After much discussion and consultation with fans, volunteers and stakeholders, it has been decided any Fans Village type environment will be better placed on the West Stand side of the stadium. The main reasons for this were the location of the vast majority of supporters arrival at the stadium which is typically down the stairs, the natural bowl environment that the hill and stairs create and the location of the Carr's Bar. It was felt that this is a better solution than expecting supporters to travel around to the other side of the stadium. As part of the East Stand development a new link road will also be created enabling the potential closing of the traffic route outside of Carr's Bar which the club feel could improve the location also. The club will be working in consultation with the FAB (Fan Advisory Board) as we look to develop this.

Will the Family Fun area be removed or relocated?

No, the very successful Family Area will remain, and plans are being discussed about how this area can be further improved to cater for the increasing number of families attending games while also considering what additional activities can be inside the East Stand concourse.

Were there considerations for a bigger East Stand or an extension to the existing footprint?

Yes, all options were considered but several factors meant the decision was to finish the East Stand within the existing footprint. These factors were mainly the existing construction, especially the location of the existing steel, the increased cost of any major changes and the planning delay these changes would have caused. The club felt strongly that considering the previous significant delays outside of its control, including the invoking of the ACV and the Judicial Review, any further delay to the completion of the East Stand would be unacceptable.

What will the new capacity of Sixfields be?

The new capacity of Sixfields will be 8,203.

Will there be any restricted view seats?

Yes, there will be a small number. This is due to the limitations of the original design and the raised platform but the club have taken steps to mitigate this as much as possible within the final design. The very small number of seats affected will be sold last and clearly marked before sale.

What facilities will the East Stand have?

There will be executive boxes on the top floor, two new large dining areas on the first floor with a full size, modern commercial kitchen and a concourse area with food, drink and retail options on the ground floor.

Will there be any options to purchase NTFC merchandise?

Yes, there will be a retail kiosk for matchdays in the East Stand concourse.

Will these facilities be used on non-matchdays?

Yes, the boardroom, lounges and executive boxes will all be available on a non-matchday either as classrooms or meeting spaces for the community or sold for usage for meetings, corporate events, launches, parties etc.

Will there be a kitchen?

Of course. There will be a full-service commercial kitchen on the first floor plus a lift to a service area on the second floor. Both will be used to cater for the hospitality areas of the East Stand. The concourse will also have a full service kiosk with new food and drink options.

Will the East Stand be sponsored?

Yes, we fully expect that the East Stand will have a sponsor like our other stands and there will be sponsorship opportunities within the stand too, such as the Executive Lounge and Boardroom etc. We will also be working with the FAB (Fan Advisory Board) to discuss the opportunities for the naming of boxes for example or to bring aspects of the club's history into the East Stand.

Has the Football Club lost the old running track?

No, in fact the club has gained the freehold of the running track area which it has never had before.

Will the Stadium be hemmed in?

No of course not, neither the East Stand nor the Stadium will be 'hemmed in.' As can clearly be seen from the plans, once the East Stand is completed there is plenty of space around all areas of the stadium for future development plus this build gives the club additional parking and a link road.

Is this the first time the club has had pitch facing hospitality?

Yes, the first time in the club's 127-year history it has had pitch facing hospitality.

What will happen to the wider land?

There have been no decisions on the wider land or the old running track land at this point. The completion of the East Stand has always been the priority along with parking to service that, and that is what the club has been focusing on. Discussions about what happens with the wider land in the future are ongoing, but these discussions will not impact or delay the East Stand completion. It is very important to once again confirm the athletics track freehold is now owned by the Football Club and the wider land is now owned by CDNL which is a wholly owned subsidiary of the Football Club. The Football Club has never owned this land and only leased it previously, therefore with the wider land purchase the benefit will go to the Football Club.

Are there any discussions for further expansion of Sixfields?

Yes, there are always discussions in regard to the future development of the club. The club feels the expansion of the North and South stands would be the natural next stages, including safe standing, but the current focus is on the investment in to the East Stand completion and the investment required on the playing side of the club to continue the progression seen over the past few years.

What if I have further questions?

Hopefully this has answered a lot of your questions but if there are any others please feel free to come to the fans forum or alternatively do not hesitate to contact the club via email or social media. Further details and exciting updates will be on the club website www.ntfc.co.uk as available.

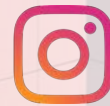
Thank you for your interest.



@ntfc



Northampton Town
Football Club



@officiallyntfc



ntfc.co.uk



ENTRANCE

EAST STAND